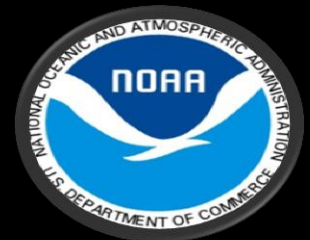


COASTAL ZONE MANAGEMENT PROGRAM

GEOSPATIAL CAPACITY

**U.S. Virgin Islands Department of Planning
and Natural Resources**



MAJOR TOOLS

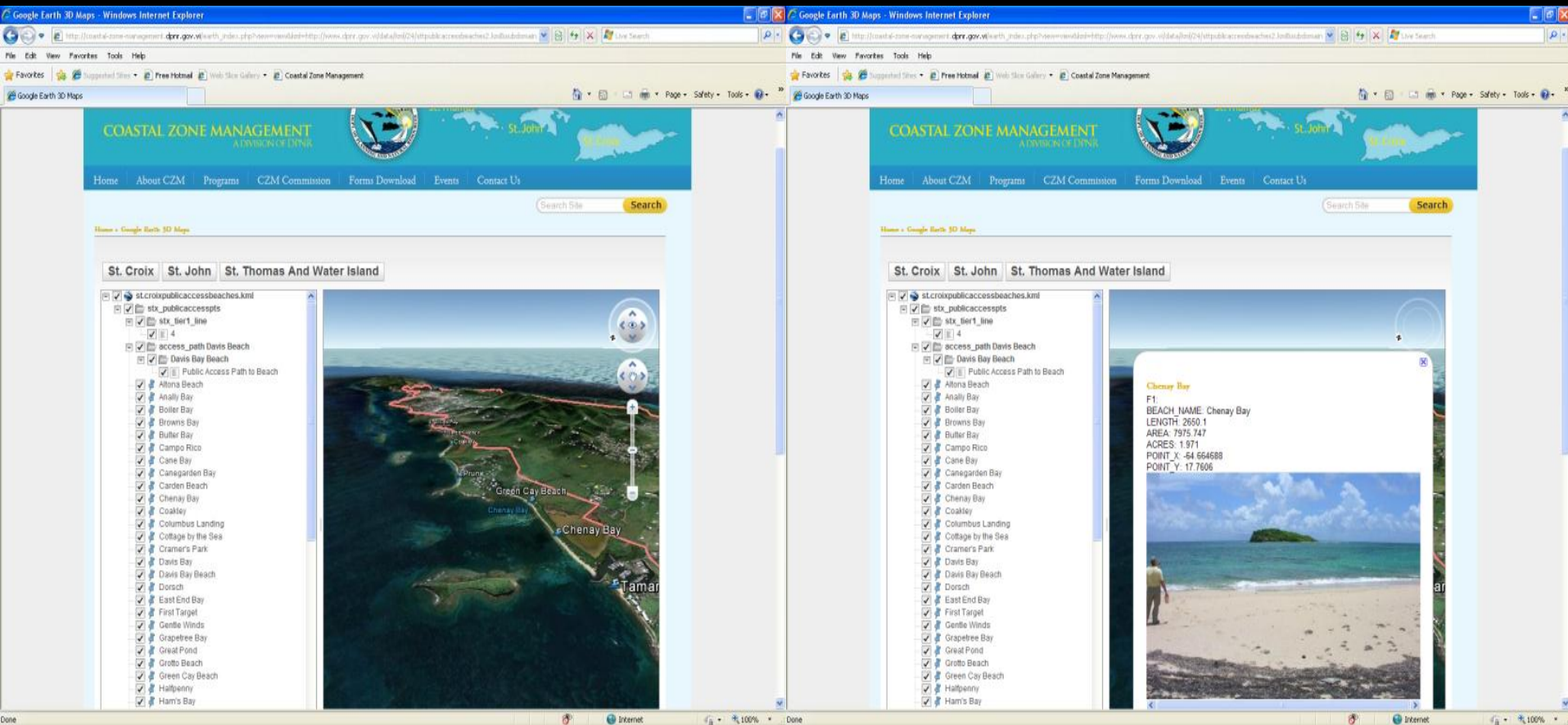
- ❖ Geographic Information Systems
 - ❖ ArcGIS 9.3 & 10.1w/extensions

- ❖ WEB services
 - Google Earth
 - Online Web portals

- ❖ Geographic Positioning System
 - Handled devices



Public Access to U.S. Virgin Islands' Beaches Web Portal



<http://coastal-zone-management.dpnr.gov.vi/google-maps>



TYPES OF SPATIAL DATA USED AT CZM

❖ Remote (quality controlled) data

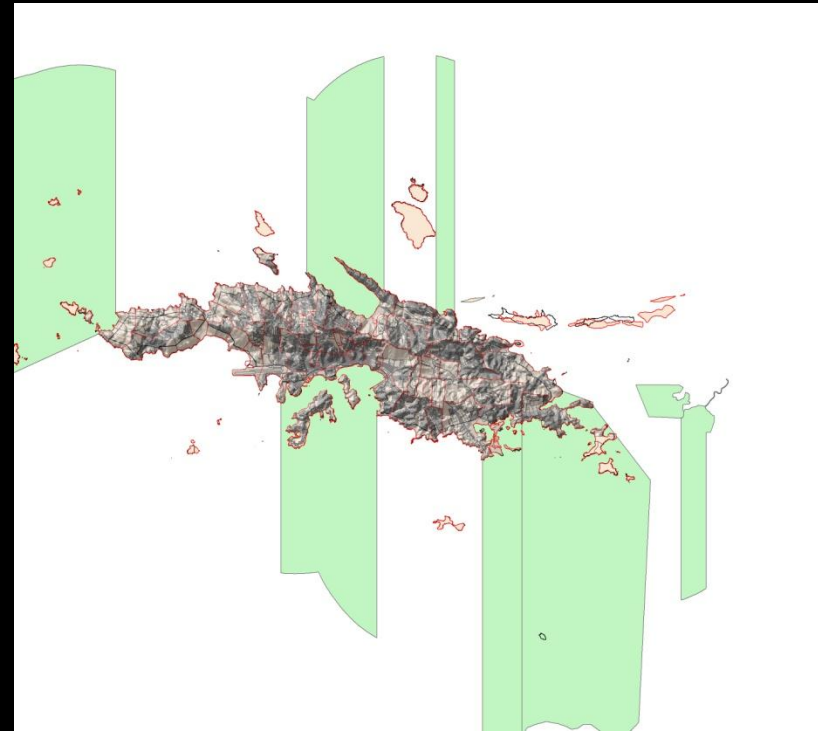
Agencies:


- U.S. Army Corps. Of Engineers
 - Aerials
 - LIDAR: DTM, Topography
- NOAA
 - Bathymetry
 - Aerial
 - Image Analysis
 - C-CAP



LOCALLY DERIVED DATA (QUALITY CONTROLLED)

- ❖ Infrastructure
 - Roads
 - Culverts
 - Commercial developments
- ❖ Manage Areas
 - APC's
 - TIER one/ TIER two
 - Watersheds-
 - Monuments
- ❖ Parcel data
 - w/up-to-date parcel information



- 
- An aerial photograph of a coastal town, likely in a tropical region, showing a large ship docked at a pier on the left, a dense residential area with many small houses, and a large body of water in the background. The text is overlaid on the image.
- ❖ **CZM WILL NEED:**
 - AVAILABLE MODELS FOR STORM SURGE PLANNING-TERRITORY WIDE**
 - IMPROVE GPS CORRECTION FOR PUBLIC- ISOLATED AREAS**





RECOMMENDATIONS

- Inter-Agencies / Inter-Department Sharing
- Enhance Communication: Email and mobile devices
- Real-time remote monitoring of natural resources
- Direct link community involvement



THANK YOU

**CONTACT INFO:
PEDRO NIEVES**

**SPECIAL PROJECT COORDINATOR-COASTAL ZONE
MANAGEMENT**

DEPT. OF PLANNING AND NATURAL RESOURCES

8100 LINDBERG BAY, STE.#16

C.E.K. AIRPORT, TERMINAL BLDG. 2ND FLOOR

ST. THOMAS, U.S.VIRGIN ISLANDS 00802

[HTTP://WWW.DPNR.GOV.VI/](http://www.dpnr.gov.vi/)

TEL:(340)774-3320 x5232

FAX:(340)714-9524

